

**Deco**  
Manufacturing

Your colours, your wall, your life...

**Advertising Material**



**Your colors, your wall, your life...**

Deco Manufacturing Ltd. is an explosion of colours and ideas that seeks to give life to your home. Every corner of your living space is an opportunity for us to express your mood, your character and your life through art. Whether you are looking to refurbish your home or any commercial space, Deco Manufacturing Ltd. is here to help you. Indeed, Deco Manufacturing Ltd. brings a tweak of affordable luxury combined with colour, style and character to every domestic or corporate space. Our catalogue of exclusive concepts ensure our clients' individual tastes matched with high quality and distinct solutions.

## Roll up Double side (85x200) 9000009



DOUBLE SIDE 2 GRAPHICS  
One for Each Side - Very stable wide cassette

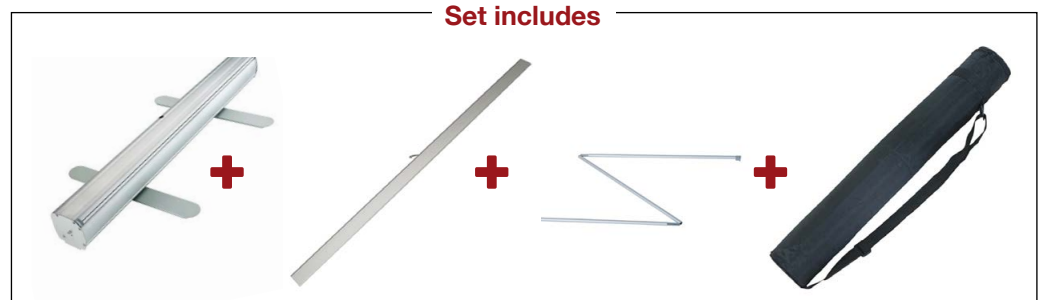
VERY THICK and RIGID ALUMINIUM  
CONSTRUCTION Upper Mounting: SNAP BAR

Attach the Graphics QUICKLY and EASILY  
Lower Mounting: "3M" Adhesive Tape.

Set includes:  
Roll-up + Convenient Double Padded Canvas Bag.



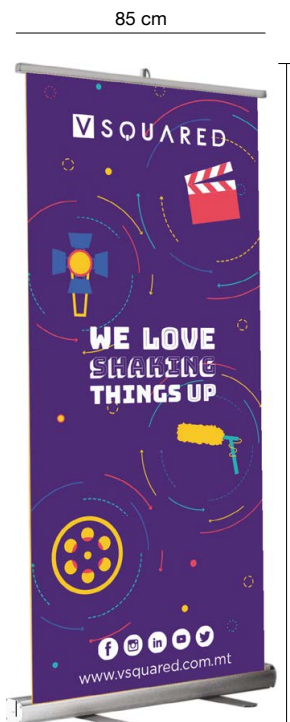
Openable in 15 seconds



## Roll up Lamp 9000131



## Roll up Standard (85X200) 9000001

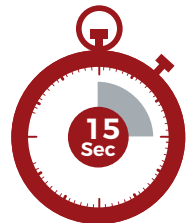


Roll-up Size: 85x200 cm.

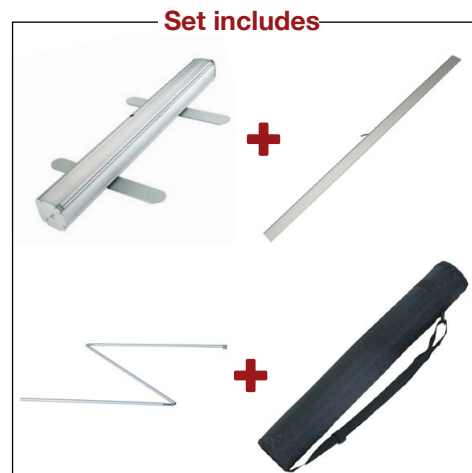
Very Stable = wide cassette - VERY THICK and  
RIGID ALUMINIUM CONSTRUCTION

Upper Mounting: SNAP BAR! - Attach the Graphics  
QUICKLY and EASILY - Lower Mounting: "3M" Adhe-  
sive Tape.

Set includes: Roll-up + Convenient Double Padded  
Canvas Bag.



Openable in 15 seconds



# POP UP Wall - 3x3 / CURVED (Small Trolley Case)



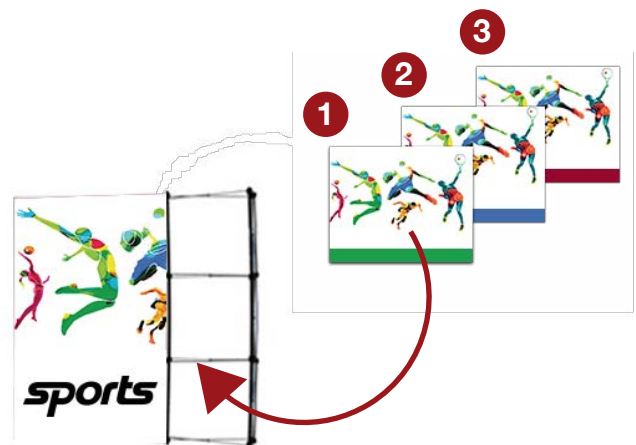
Spread the POP UP Wall in 8 minutes!  
This is CURVED SHAPE POP UP Wall.

You can change the Size of the POP UP Wall  
(Add or Remove the Modules) - 3x4 or 3x2.

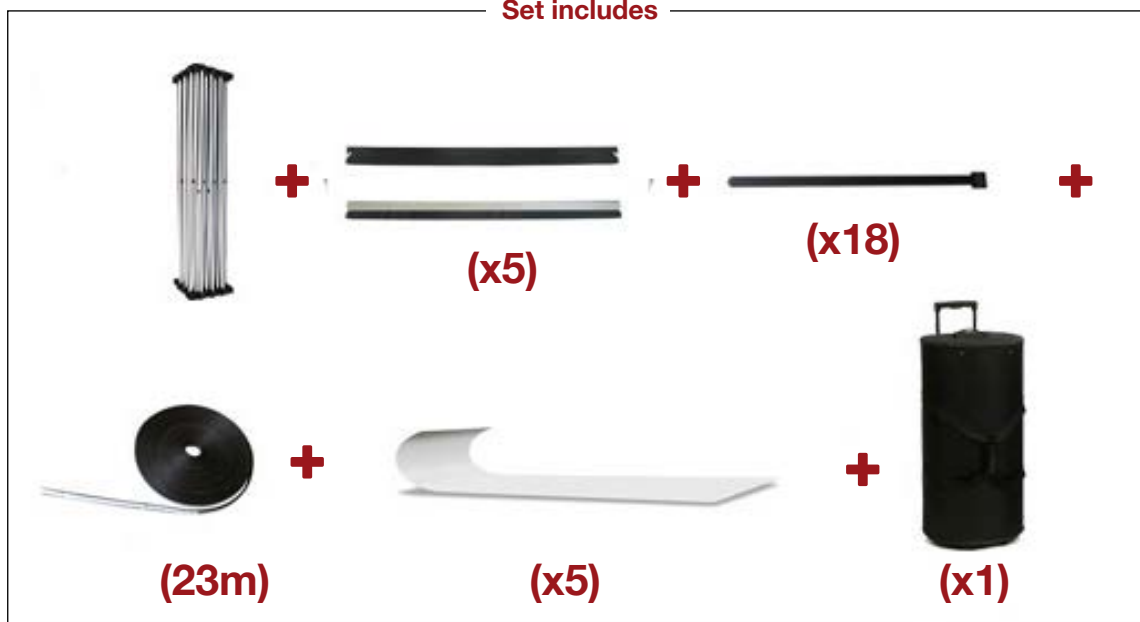
Size (with the Graphics): 275cm x 230 cm.  
(width x height)

POP UP Wall in Trolley Case = Very comfortable to transport!

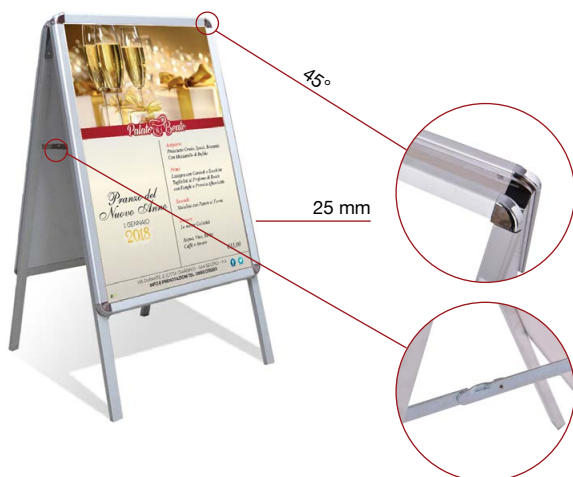
You also get Polypropylene Material  
(rigid material under the Graphics)



## Set includes



## A - BOARD (Double Side) A1 (594x841 mm) 9000052



A - BOARD with DOUBLE SIDE Graphics.  
SNAP FRAME = Very easy to change the graphics

Size: A1 (594x841 mm). - Construction: Anodized Aluminum.

Profile Width: 25 mm = Stiffness warranty

Corners cut at 45 degrees = Very aesthetic

Set includes: A - board with thick anti-reflective Film.

## Snap Frame

A1 (594x841 mm) **9000043** | A2 (420x594 mm) **9000042**

A3 (297x420 mm) **9000041** A4 (210x297 mm) **9000040**

SNAP FRAME = Very easy to change the graphics!

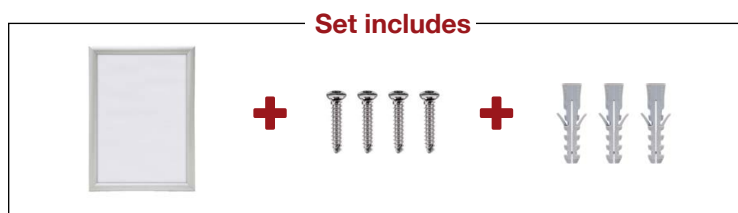


Construction: Anodized Aluminum.

Profile Width: 25 mm = Stiffness warranty.

Corners cut at 45 degrees

Set includes: Snap frame with a thick anti-reflective film and mounting Pegs.



# A - BOARD (Double Side) - OUTSIDE - WATERBASE

9000251



HEAVY WATER BASE = VERY STABLE! (Special for OUTSIDE)  
(You put the water Inside = VERY STABLE)

A - BOARD with DOUBLE SIDE Graphics.  
SNAP FRAME = Very Easy to Change the Graphics!

(OPEN + INSERT + CLOSE)

Size: A1 (594x841mm).  
Construction: Anodized Aluminum.  
Profile Width: 33 mm = Stiffness Warranty!  
Corners cuted at 45 degrees= Very aesthetic!

Set includes: A - board with a thick anti-reflective Film.



# Poster Hangers

100 cms (9000224) 85cms (9000266) 60cms (9000265) 40cms (9000264)



Poster Hangers (SET = 2 pcs: Top / Bottom)

Type: "Snap Frame" (CLIP - CLAP) = Quick Installation

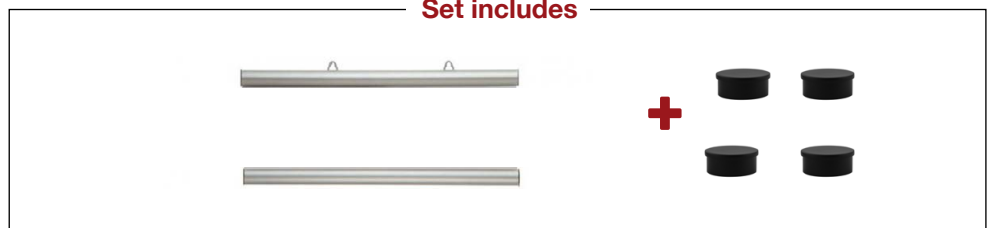
Very Easy to Change the Graphics!

Length: 100, 85, 60, 40 cms.

ANODIZED ALUMINUM, Plastic plugs, 2 handles for mounting.

Poster Holder (2 pcs)

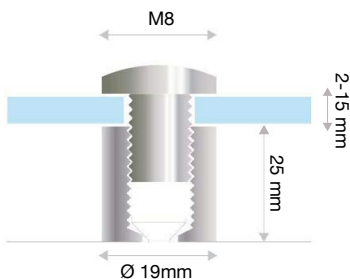
Set includes



# Sign Fixing

19x25 (Aluminum) 9000390 | 19x25 (Polish steel) 9000091

- Easy to install
- Ideal for Health and safety signs
- Ideal for House plaques
- Perspex size available A5, A4, A3, A2, A1, B5

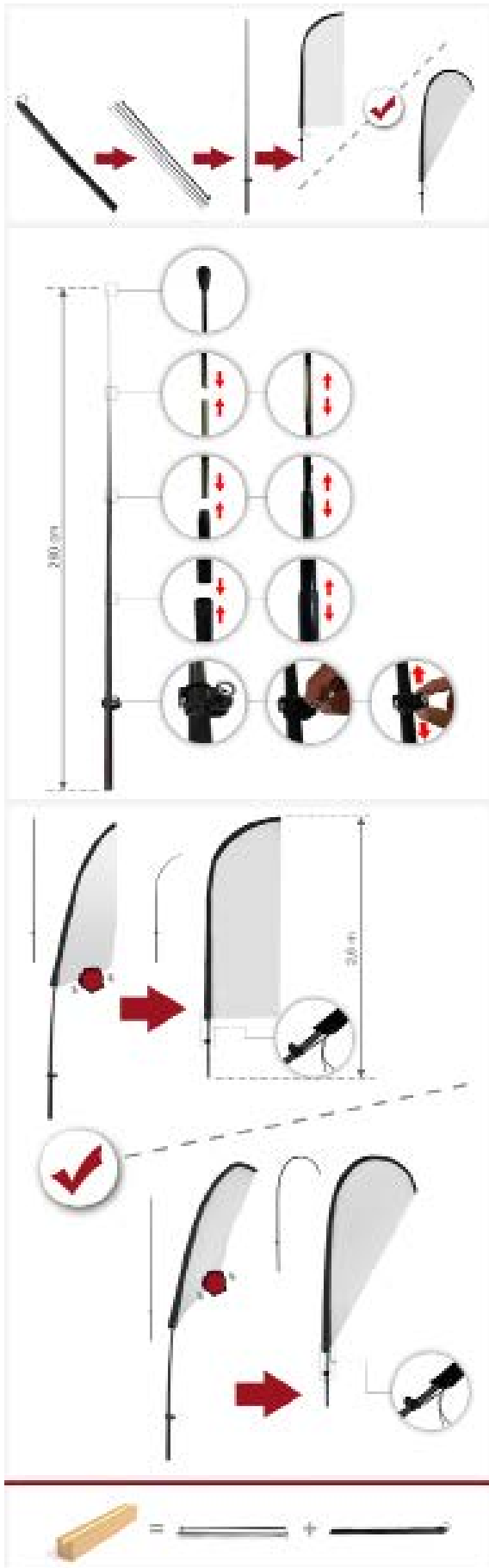


- Aluminium
- Mat



**Promotional FLAG - Flying Banner - 2,6 m 9000501**

**Promotional FLAG - Flying Banner - 3,1 m 9000502**



Flags are a fantastic marketing tool that enables your business to get noticed, an excellent visual showpiece for a forecourt, marquee or shop front. From either long distance or short distance, they are sure to catch the attention.

All flags are printed on High-Grade UV Polyester Substrate, which produces non-fading waterproof graphics, and enables them to be highly durable for seasonal weather conditions.

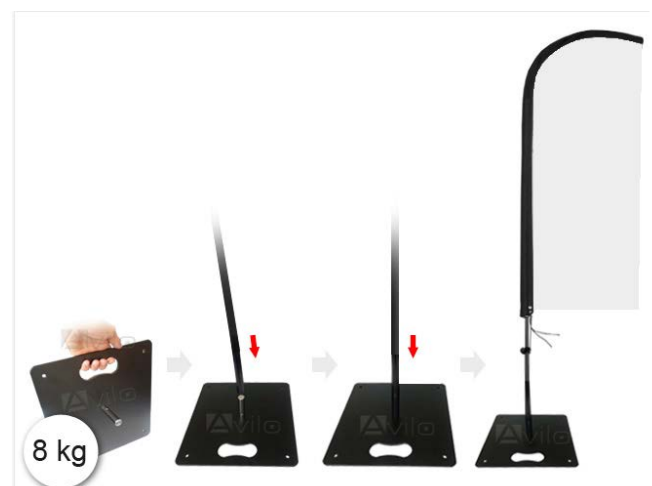
**Flying Banner BASE - SQUARE / FLAT (4 kg)**

**9000506**



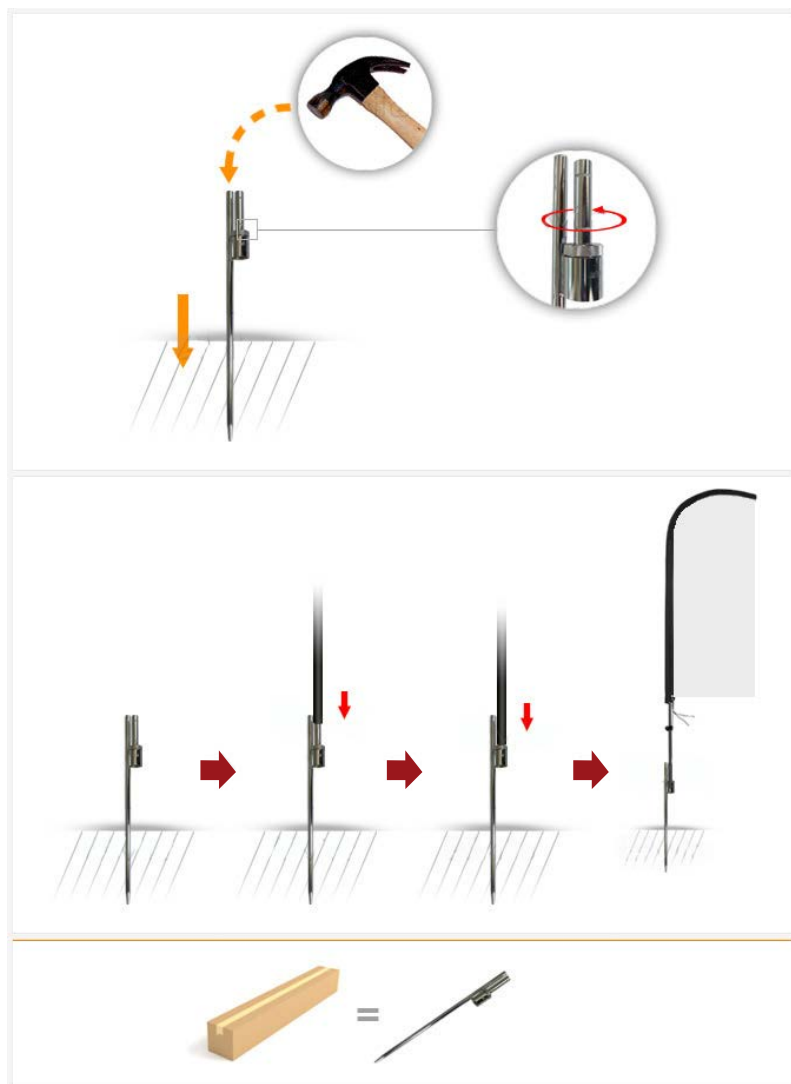
**Flying Banner BASE - SQUARE / FLAT (8 kg)**

**9000630**





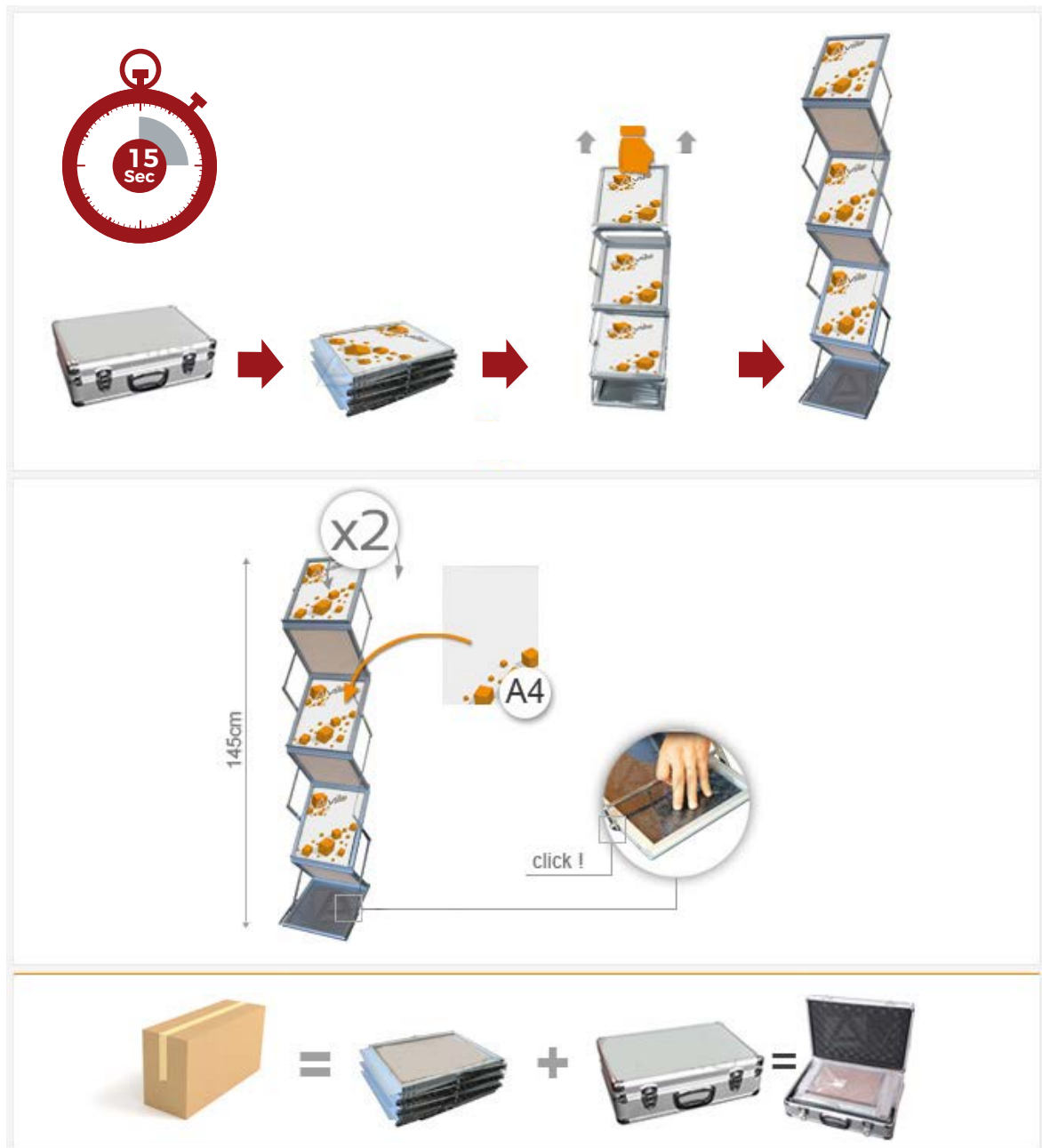
## Flying Banner BASE - SPIKE / SPITZ 9000505



## Flying Banner BASE - CROSS 9000510



# Literature Stand Z-SHAPE (hard CARRY CASE) 9000016



Construction: Aluminum and Plexiglas.

Set includes: Brochure Stand + Hard Carry Case.



choose your style with elegance,  
design your ideas with inspiration, and achieve them with Deco.

